

030-1400 Paddle Handle



This flush mounted paddle is a redesign of our 030-0400 paddle handle for entrance doors on recreational and specialty vehicles. Containing the same proven mechanical details as previous with a modernized look, it can be used in FMVSS 206 applications and features a remote pivot plate and lock cam actuation.

FEATURES/BENEFITS:

- Offers updated styling
- Inside lock provides override if outside paddle should be locked
- Molded rubber gasket for flange of housing provides resistance to water and dust infiltration



TriMark Corporation

500 Bailey Avenue
P.O. Box 350
New Hampton, Iowa 50659
United States

Tel: 641-394-3188

Fax: 641-394-2392

1-800-447-0343

www.trimarkcorp.com

10002707 QM08 ISO 9001: 2008
10002707 TS09 ISO/TS 16949: 2009



TriMark Corporation

TriMark Europe

Cedar Court
Walker Road
Bardon Hill
Coalville LE67 1TU
United Kingdom

Tel: +44(0)1530 512460

Fax: +44(0)1530 512461

www.trimarkeu.com

427961 QM08 ISO 9001 : 2008
427961 UM ISO 14001 : 2004



TriMark Europe Ltd.



- Lock can be keyed to match other TriMark door products with KeyOne Plus for a single-key system, keyed alike or provided non-locking
- Several pivot plate options are available to suit a wide variety of applications



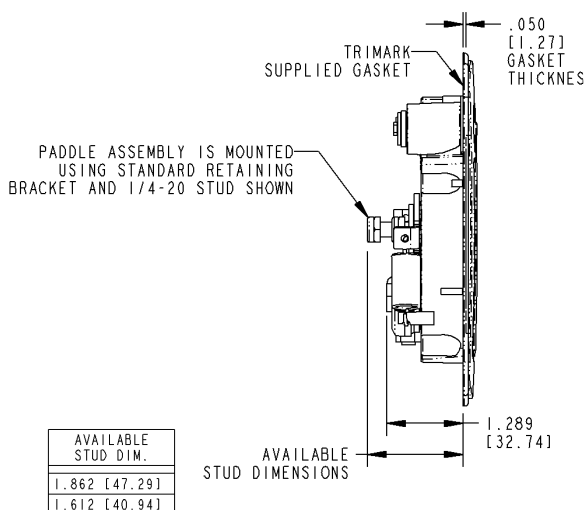
- Sturdy zinc die cast alloy housing and paddle
- Steel components: zinc plated, mild steel

- Standard black powder coated, buffed copper-nickel-nickel-chrome plated or combination black powder coated housing and buffed chrome paddle

- Handle is easy to install with supplied single 1/4-20 UNC nut and mounting bracket (Mounting torque not to exceed 30 in-lbs [3.39N-m])
- Either handed version can be installed in a wide range of locations in both horizontal or vertical orientations (left hand shown)
- Retrofits with most 030-0400 flush paddle handles

Individual part dimensions are for reference only. Refer to individual part drawings for complete dimensions, specifications, and installation procedures. Engineering assistance and application drawings are available.

Design Patent No. D537,701



**For more information visit
www.trimarkcorp.com**

CAUTION: Applications of this product may fall within the requirements of FMVSS 206 and SAE J839 safety standards. These safety related requirements are dependent on door application, e.g. front and rear hinged doors, sliding doors, or hinged upward swinging doors. The entire door hardware system must be included in the design/analysis process latch, handle, lock mechanism, cables/rods/linkages, fasteners, hinges, etc. This ensures compatibility of all components within the hardware system. If FMVSS 206 is a requirement, then all of the components within the door system must comply with strength, inertia and locking requirements as specified within the Standard. Note that this product complies with FMVSS 206 when tested in accordance with SAE J839 and that this product meets FMVSS 206 locking requirements and may be used in FMVSS 206 applications pending TriMark application approval.